

Alameda® PATIO STONE

*Simplifies the creation of stunning
walkways and patio spaces.*

EASY TO INSTALL

One unit, two unique face styles, simplifies installation. Units utilize Xeristone® Technology for a secure unit-to-unit interlock.

ADDS BEAUTY

Irregular face shapes skillfully create the illusion of individual river stones.

PROJECT PERFORMANCE

Combines a naturally weathered look with the strength and long-term durability expected from a Keystone product.



One unit size - two unique faces.

Specifications

- 2^{3/8}" h x 11" w x 13" d
- Approximately 26 lbs each
- One square foot per unit

Installation

Step 1

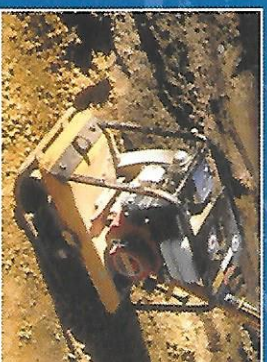
Mark & Dig



Excavate the installation area to approximately 6 in. larger on all sides than the actual finished size.

Step 2

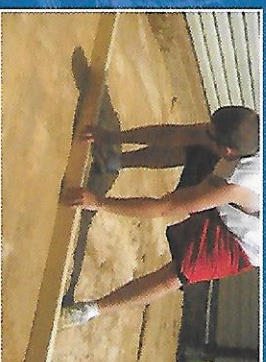
Place & Compac



Install patio base to a compacted finished thickness of 4 in. for patios and walkways.

Step 3

Base Preparation



Lay a 1 in. outside diameter pipe on base. Spread 1 in. of sand over compacted base. Level the sand by dragging a 2 in. x 4 in. board over pipe.

Step 4

Lay Stones



Lay patio stones in the desired pattern. If the desired pattern requires cutting, the patio stones can be cut with a wet saw.

Step 5

Sand & Finish



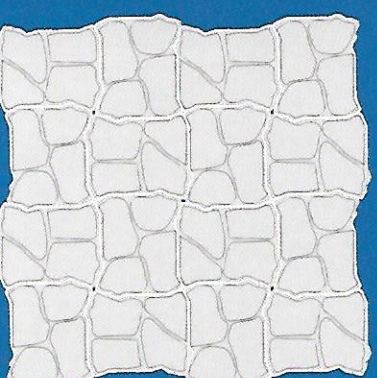
Spread polymeric sand on the installation and sweep into joints, according to manufacturer's instructions. Sweep off any loose sand from project surface.

Optional Edge Restraint*



Install patio restraint edging and spikes around the entire project, according to the manufacturer's instruction.

* If an irregular edge is desired: Use a small section of plastic edging, with an opening to fit a steel spike, to hold the patio stone in place. In most situations, one spike per stone would be required.



Sample layout pattern.